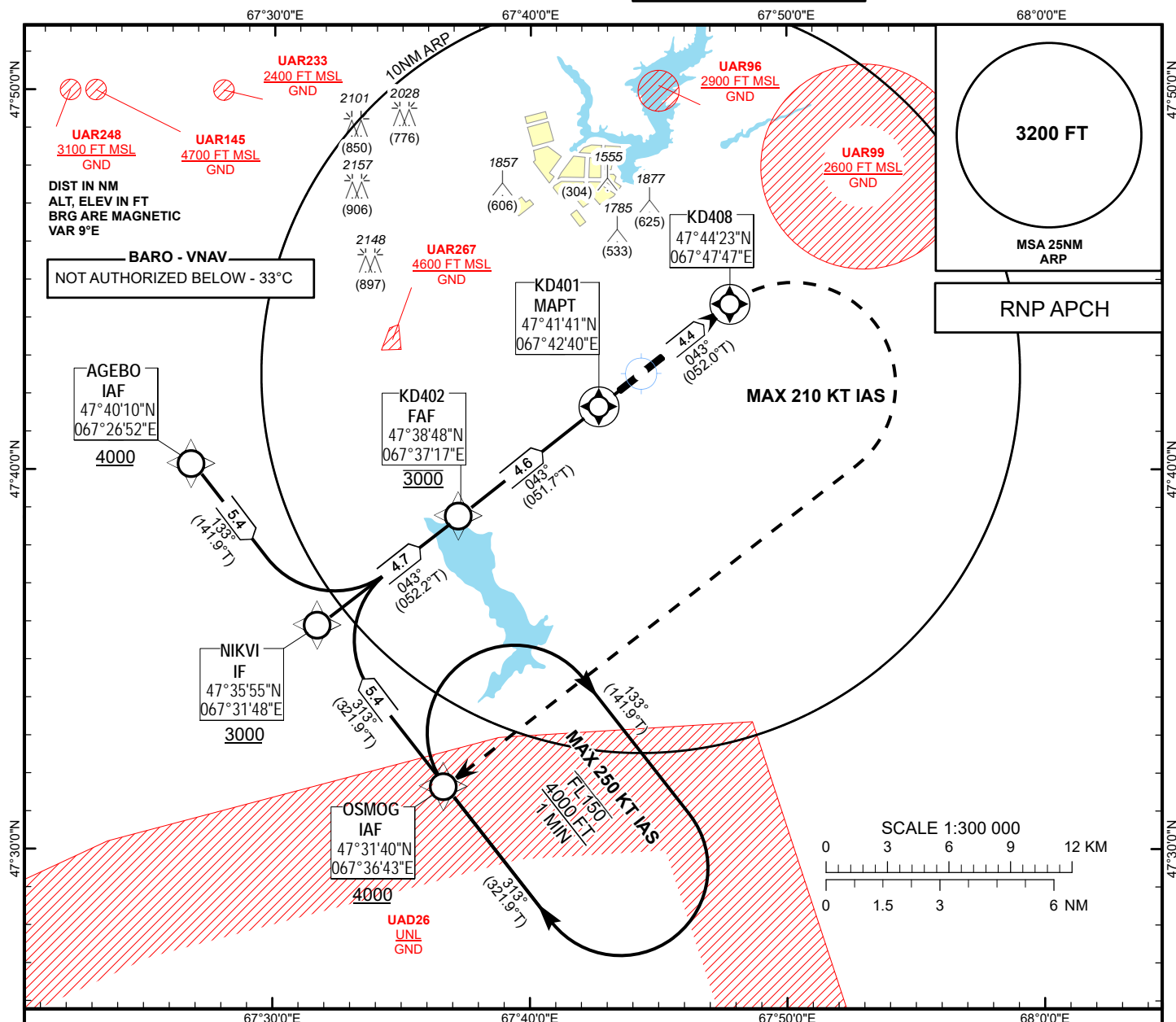


INSTRUMENT
APPROACH
CHART - ICAO

AERODROME ELEV **1251FT**
HEIGHTS RELATED TO
AD ELEV

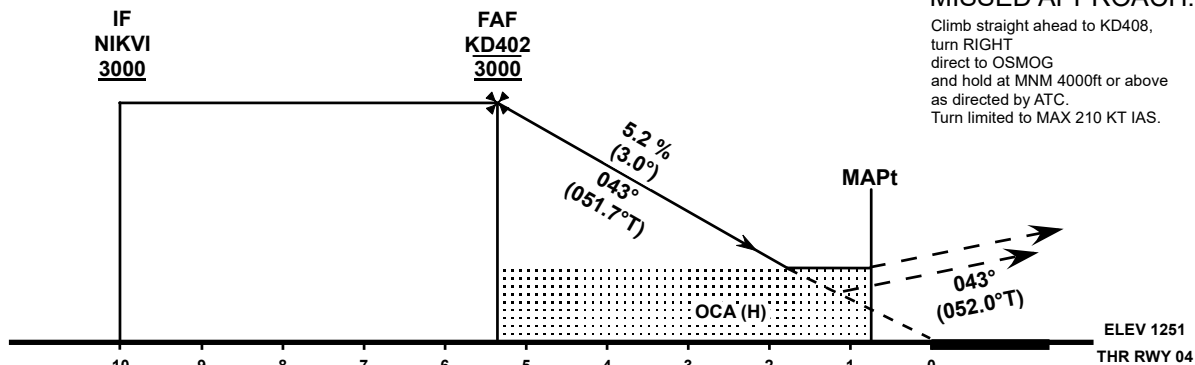
ZHEZKAZGAN TOWER 127.1
ZHEZKAZGAN ATIS (EN) 131.4
ZHEZKAZGAN ATIS (RU) 122.4

ZHEZKAZGAN
RNP RWY 04



MISSED APPROACH:

Climb straight ahead to KD408,
turn RIGHT
direct to OSMOG
and hold at MNM 4000ft or above
as directed by ATC.
Turn limited to MAX 210 KT IAS.



OCA(OCH)		A	B	C	D
Straight	LNAV	1530(280)			
	LNAV/VNAV	1420(169)	1429(178)	1450(199)	1477(226)

DIST to KD401	4.6	4	3	2	1
ALTITUDE	3000	2800	2480	2160	1840
HEIGHT	1749	1549	1229	909	589

GS	kt	80	100	120	140	160	180
Rate of descent	ft/min	425	531	637	743	849	955
FAF - MAPt (4.6 NM)	min:s	3:29	2:47	2:19	1:59	1:44	1:33

CHANGE: Renumbered.

TABULAR DESCRIPTION

RNP RWY04											
Serial Number	Path Descriptor	Waypoint Identifier	Fly - over	Course °M(°T)	Magnetic Variation(°)	Distance (NM)	Turn Direction	Altitude (FT)	Speed (KT)	VPA (°)	Navigation Specification
010	IF	AGEBO	-	-	+8.8	-	-	+4000	-	-	RNP APCH
020	TF	NIKVI	-	133(141.9)	+8.8	5.4	-	+3000	-	-	RNP APCH
010	IF	OSMOG	-	-	+8.8	-	-	+4000	-	-	RNP APCH
020	TF	NIKVI	-	313(321.9)	+8.8	5.4	-	+3000	-	-	RNP APCH
010	IF	NIKVI	-	-	+8.8	-	-	+3000	-	-	RNP APCH
020	TF	KD402	-	043(052.2)	+8.8	4.7	-	@3000	-	-	RNP APCH
030	TF	KD401	Y	043(051.7)	+8.8	4.6	-	@1523	-	-3	RNP APCH
040	CF	KD408	Y	043(052.0)	+8.8	4.4	-	-	-	+1.4	RNP APCH
050	DF	OSMOG	-	-	+8.8	-	R	+4000	-210	+1.4	RNP APCH
060	HM	OSMOG	-	313(321.9)	+8.8	-	R	+4000/-FL150	-250	-	RNP APCH

WAYPOINT COORDINATES

RNP RWY04		
Waypoint Identifier	Coordinates	
AGEBO	474009.80N	0672651.85E
KD401	474140.64N	0674240.14E
KD402	473848.04N	0673717.16E
KD408	474422.51N	0674747.20E
NIKVI	473555.16N	0673147.94E
OSMOG	473140.31N	0673643.23E